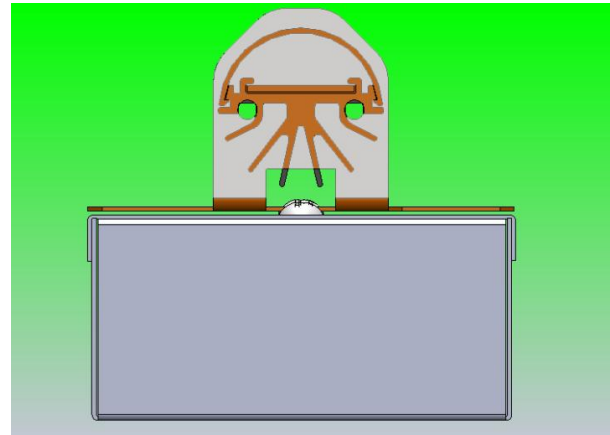


# STRIP FIXTURE SERIES

## THE HIGH PERFORMANCE

*LED Fixture Series (surface-mount or hung) for Passageway, Stairwells, General, Direct and Indirect Illumination*

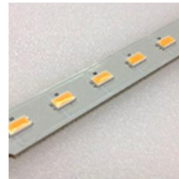


### KEY FEATURES INCLUDE:



#### Advanced Thermal Management

Industry Leading Deep Fin Heat Sinks with Aircraft Grade Aluminum and 9" (23cm) [min] of perimeter conductive surface.



#### Long Lasting LED Chips

Calculated  $L_{90}(10k) = 102kHrs$



#### Multiple Color Options

Three color options ensure that the new lighting will match your current aesthetics, and allows for custom color options.



#### Modular Design

Modular PC Boards allow for a wide range of sizes to be cost-effectively manufactured.



#### 10 Year Warranty

Industry Leading 10 Year Warranty of operation on all LED Tubes and external drivers.



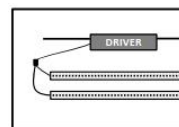
#### High Color Rendering

Colors are enhanced due to the use of LEDs selected directly on the black body curve.



#### Manufactured in America

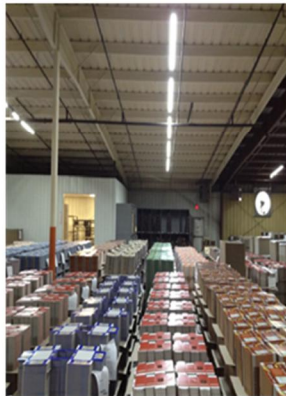
With domestic and imported components. Factory: Southeastern PA. Higher quality control, faster delivery times, and new domestic job creation.



#### Independent Class II Driver

Safety, improved thermal management, and extended lifetime are gained by locating the driver remote from the LED Engine.

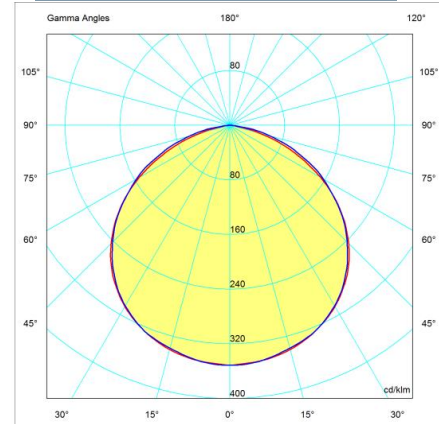
# STRIP FIXTURE SERIES



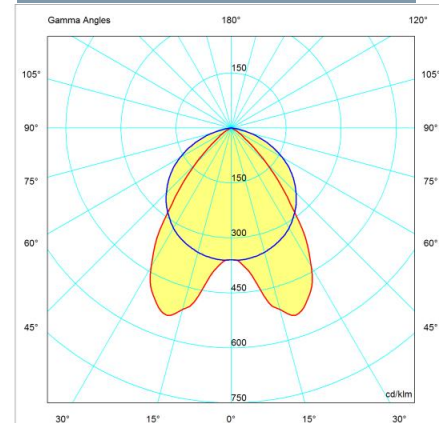
# STRIP FIXTURE SERIES

Specification Table	
Environmental	Dry or damp locations only IP2X per EN60529
Ambient Operation Storage	-25°F to 140°F/(-31°C to 60°C) <sup>6</sup> 25°F to +185°F/(-31°C to +85°C) <sup>6</sup>
Wattage	See chart below <sup>11</sup> (±10%)
Input Voltage (nominal)	100-277VAC 50/60Hz .32-.18A [120-300VDC] <sup>8</sup> +24VDC
Power Factor (PF)	>0.9
Total Harmonic Distortion (ATHD)	<20%
Life Time Retro-Fit Kit Rated Life LED Tube per TM-21	>100KHrs Calculated L70(10k) > 355kHrs <sup>16</sup> (5630) Calculated L70(10k) > 100kHrs <sup>16</sup> (3030) Reported L70(10k) >60kHrs
LED Driver MTBF <sup>2</sup> -	>100khrs, Full load, 25°C
LM80 Data	NVLap Accreditation
LED Type	SMD 5630 SMD 3030 (54W)
Efficiency	>120lm/W <sup>10</sup> (See table below)
Normal Narrow	160°FW, 120°FWHM 120°FW, 80°FWHM
Energy Consumption [nominal]	16 kWh/1000 h
Certifications	cUL, UL, FCC, DLC
Warranty <sup>17</sup>	LED Driver - 10 years LED Tube - 10 years Fixture - 10 years
Dimming	<20%-100% (See table below) 0-10V
Off State Power Consumption	<1 Watt
On State	Instantaneous

## Normal (120°)- SF1, SF2



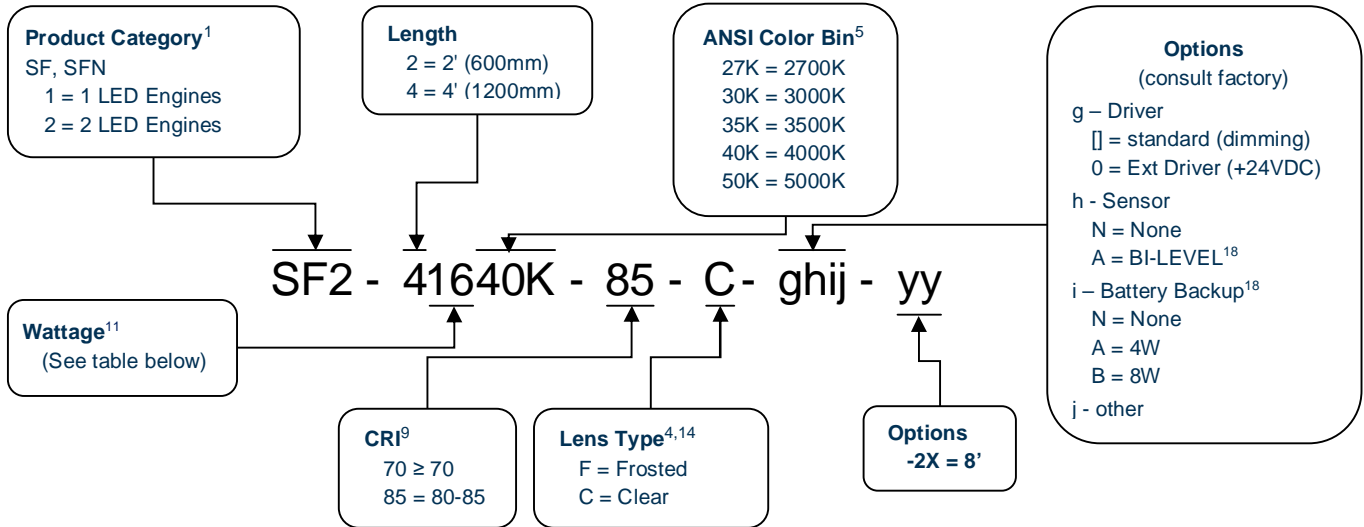
## Narrow (80°) - SFN1, SFN2



Package Information	
Standard Package	Case
Quantity	1 Unit
Sales Units	1 Unit
Package Items	1 Unit Complete
Weight lbs(kg)	Others consult factory
SF1	9 (4)
SF2	10 (5)



# STRIP FIXTURE SERIES



<b>Accessories (consult factory):</b> Hangers SF Y-Hanger, 60" (192-0021000) Wire Guard	<b>Most Popular:</b> SF1-42240K-85-C SF1-42950K-85-F SF1-42240K-85-F-BA SF1-20940K-85-F-BAA
--	---

 Cat - 21) Linear Ambient Luminaires: Direct	
SF1-42235K-85-C	SF2-42950K-85-C
SF1-42240K-85-C	SF2-42935K-85-F
SF1-42250K-85-C	SF2-42940K-85-F
SF1-42235K-85-F	SF2-42950K-85-F
SF1-42240K-85-F	SF2-42235K-85-C
SF1-42250K-85-F	SF2-42240K-85-C
SF1-42935K-85-C	SF2-42250K-85-C
SF1-42940K-85-C	SF2-42235K-85-F
SF1-42950K-85-C	SF2-42240K-85-F
SF1-42935K-85-F	SF2-42250K-85-F
SF1-42940K-85-F	SF2-42935K-85-C
SF1-42950K-85-F	SF2-42940K-85-C

Length (ft)	Light Engines - Lumens <sup>1, 4, 11</sup> @5000K @CRI – 85 (-12% to 2700K)		
	Qty	Wattage (W)	SFx
2	1	9	1325
		14	1825
		28	3250
4	1	12	1325
		16	1900
		22	2575
		29	3875
		54 (CRI 70)	7100
	2	44	5150
4 (DC)	1	24	3550
		48	7000
8 (-2X)	2	58	7725





LED Lighting | Forged in America™

# STRIP FIXTURE SERIES

## Notes

1. Not all model combinations are available
2. MBTF per MIL-HDBK-217F
3. Extended lead times and minimums maybe required for some models
4. Frosted lens has less output than clear lens
5. Other ANSI Color bins available
6. Operation to -40°F/-40°C is available
7. Extended warranties are available
8. Non-UL applications (Some Models)
9. 70 and 85 are standard and can be produced with any color
10. Specifications and availability subject to change without notice
11. Varies depending on color temperature, CRI, LED driver and lens ( $\pm 10\%$ )
12. Patent Pending: USA +40 Countries
13. EPC Act -179d tax incentive ready product given dimming bi-level switching requirements
14. Certain chemicals that may exist in end-user locations release airborne contaminants that can impact the integrity and safety of key fixture components that contain acrylic or polycarbonate material.
15. N/A
16. Worst case temperature @25°C.
17. Consult website for further details.
18. Conforms to basis of BNY Title 27/Sub-chapter 6 [C26-605.1] 27-381 when HF series specified with 150mA cable and 4 watt battery backup, when battery is charged for no less than 48hrs, emergency illumination will be greater than 120 minutes. IndependenceLED is not responsible for improper installation, maintenance, and/or specification.

## Compliance Standards

- UL 1993 - Self-Ballasted Lamps and Lamp Adapters, Ed. 4: 2012
- UL 1598 - Luminaires
- UL 1598C - Light-Emitting Diode (LED) Retrofit Luminaire Conversion Kits
- UL 8750 - Standard for Light Emitting Diode (LED) Equipment for Use in Lighting Products, Ed. 1: 2009
- CSA C22.2 No. 250.13 - Light emitting diode (LED) equipment for lighting applications, Ed. 1222012
- EN 62471:2008 - Photo Biological Safety of Lamps and Lamp Systems
- EN 62031:2008 - LED modules for general lighting. Safety specifications
- EN 61347-1:2008 - Lamp controlgear. General and safety requirements
- EN 55015:2006 - Limits and methods of measurement of radio disturbance characteristics of electrical lighting and similar equipment
- EN 61347-2-13:2006 - Lamp controlgear. Particular requirements for d.c. or a.c. supplied electronic control gear for LED modules
- EN 61000-3-2:2006 - Electromagnetic compatibility (EMC). Limits. Limits for harmonic current emissions
- EN 61000-3-3:2008 - Electromagnetic compatibility (EMC). Limits. Limitation of voltage changes, voltage fluctuations and flicker in public low-voltage supply systems
- EN 60598-1:2008 - Luminaires. General requirements and tests
- EN 61547:2009 - Equipment for general lighting purposes. EMC immunity requirements
- FCC Part 15, Subpart B, Class B -
- ANSI/ANSI G C78.81-2010 - Electric Lamps-Double-Capped Fluorescent Lamps-Dimensional and Electrical Characteristics
- ANSI/NEMA/ANSI G C78.377-2008 - American National Standard for Specifications for the Chromaticity of Solid State Lighting (SSL) Products
- ISO-9001:2008 Certification - The International Organization for Standardization fosters consistency in product delivery and quality assurance
- IEC 60529-2004 - Degrees of Protection Provided by Enclosures (IP Code)
- DOH Article 81.19 (b) - Lighting and ventilation
- FDA Article 6-202.11 - Light Bulbs, Protective Shielding

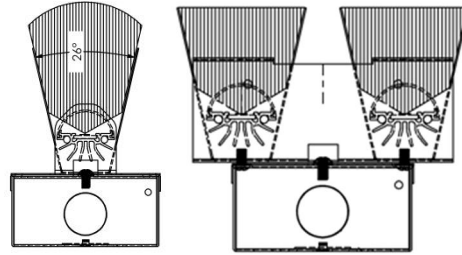


4.7.2017

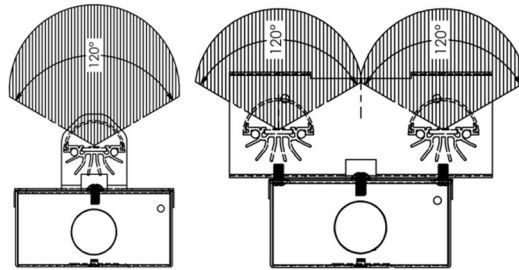
Philadelphia Headquarters: 487 Devon Park Drive, Suite 204, Wayne, PA 19087

[www.IndependenceLED.com](http://www.IndependenceLED.com) (484) 588-5401

## Beam Pattern



Narrow - SFN1, SFN2



Normal - SF1, SF2

## Mechanical

