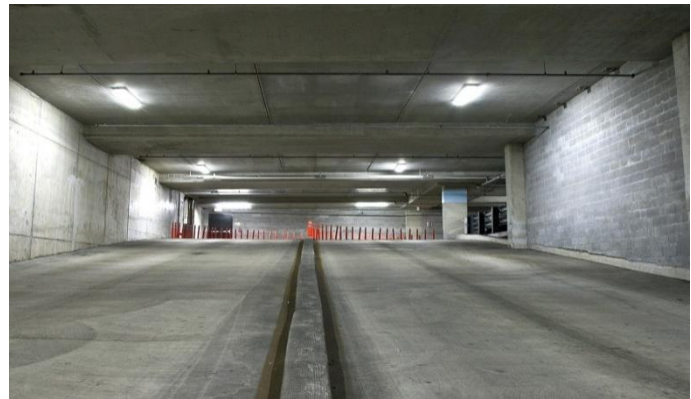


# LED VAPOR TIGHT SYSTEM

## THE HIGH PERFORMANCE

*LED Luminaire Series for Parking Garages, Stairwells, Wet Locations Coolers and General Illumination*

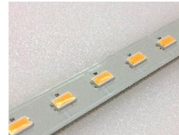


### KEY FEATURES INCLUDE:



#### Multiple Color Options

Ensure that the new lighting will match your current aesthetics, and allows for custom color options.



#### Long Lasting LED Chips

L<sub>90</sub> in excess of 101kHrs



#### 10 Year Warranty

Industry Leading 10 Year Warranty on all LED and external drivers.



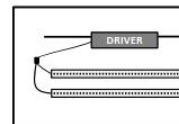
#### High Color Rendering

Colors are enhanced due to the use of LEDs selected directly on the black body curve.



#### Manufactured in America

With domestic and imported components. Factory: Southeastern PA. Higher quality control, faster delivery times, and new domestic job creation.



#### Independent Class II Driver

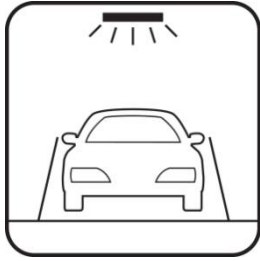
Safety, improved thermal management, and extended lifetime are gained by locating the driver remote from the LEDs.



LED Lighting | Forged in America™

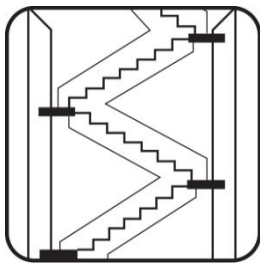
# LED VAPOR TIGHT SYSTEM

## 24/7 APPLICATIONS



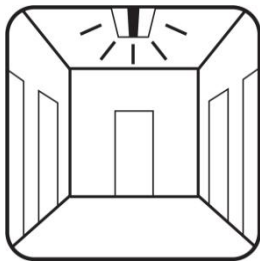
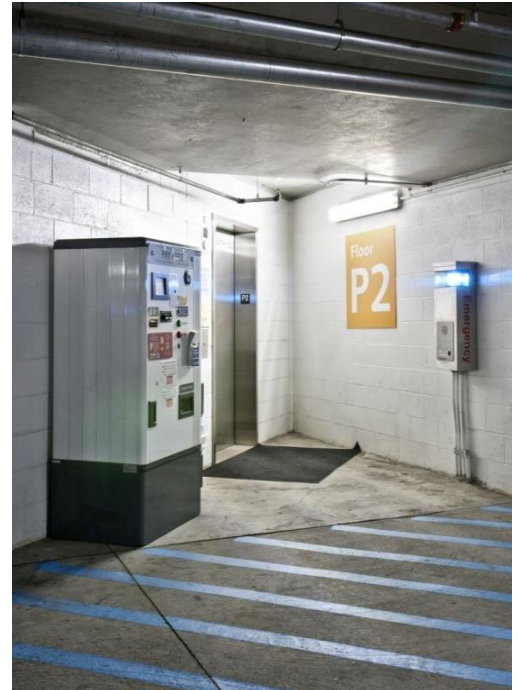
### PARKING

Structures, surface and underground garages



### STAIRWELL

24/7 fire stairs for any property type



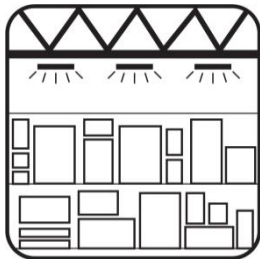
### HALLWAY

Hotels, hospitals, multi-family & dorms



Before LED RetroFit

After LED RetroFit



### INDUSTRIAL HIGH BAYS

Factories, warehouses & distribution centers



Philadelphia Headquarters: 487 Devon Park Drive, Suite 204, Wayne, PA 19087

[www.independenceLED.com](http://www.independenceLED.com) (484) 588-5401



LED Lighting | Forged in America™

# LED VAPOR TIGHT SYSTEM

**LENGTH OPTIONS:**

2' & 4' – standard, 8' - special order

**OUTPUT WATTAGE (See table below)**

**COLOR OPTIONS:**

3000K, 3500K, 4000K, 5000K standard<sup>5</sup>

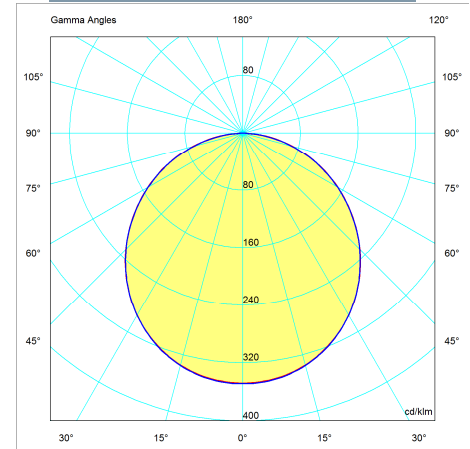
CRI – 85

DIMMING - standard

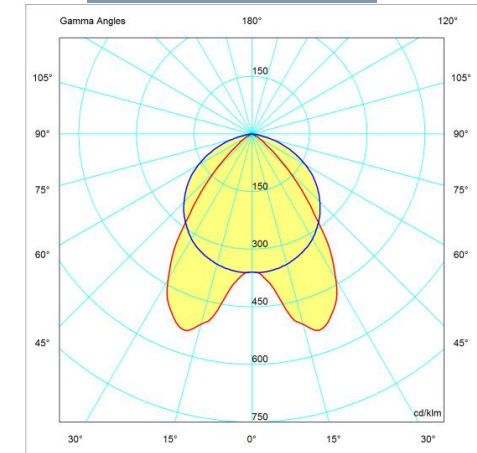
Specification Table	
Environmental	Suitable for Damp Locations up to IP67 per EN60529
Ambient Operation	-25°F to 104°F/(-31°C to 40°C) <sup>6,7</sup>
Storage	-25°F to >185°F/(-31°C to >85°C)
Wattage	See table below <sup>12</sup>
Input Voltage (nominal)	100-277VAC 50/60Hz .8-.3A [120-300VDC] <sup>9</sup> 347-480VAC 50/60Hz via internal autotransformer
Power Factor (PF)	>0.9
Total Harmonic Distortion (ATHD)	<20%
Life Time	>100khrs
Rated Life-LEDs per TM-21 -	Calculated L <sub>70</sub> (10k) = 378kHrs <sup>16</sup> Calculated L <sub>90</sub> (10k) = 101kHrs <sup>16</sup> Reported L <sub>70</sub> (10k) >60kHrs
LED Driver <sup>7</sup>	
Lifetime - MBTF <sup>2</sup> -	>80khrs 120VAC, 80% load, 60°C(140°F) >320khrs 120VAC, 80% load, 25°C(77°F)
LM80 Data	NVLap Accreditation
LED Type	SMD 5630
Efficiency (some models)	>130lm/W (See table below) <sup>12</sup>
Normal	160°FW, 120°FWHM
Narrow	120°FW, 80°FWHM
Wide	180°FW, 180°FWHM
Certifications	cUL, UL, FCC, DLC
Warranty <sup>17</sup>	LED Driver - 10 years LED - 10 years Fixture - 10 years
Dimming	<20%-100% (See below) 0-10V
Off State Power Consumption	0 Watts
On State	Instantaneous

Package Information	
Standard Package	Case
Quantity	1
Sales Units	1
Package Items	1 Unit Complete
Weight lbs(kg)	4' - 18 (9) // 2' - 9 (5)

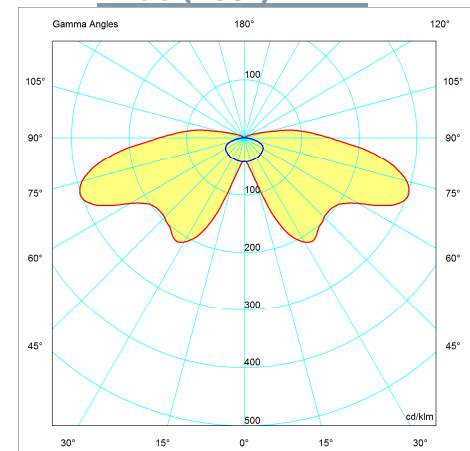
**Normal (60°)- VT1 & VT2**



**Narrow (40°)- VTN2**



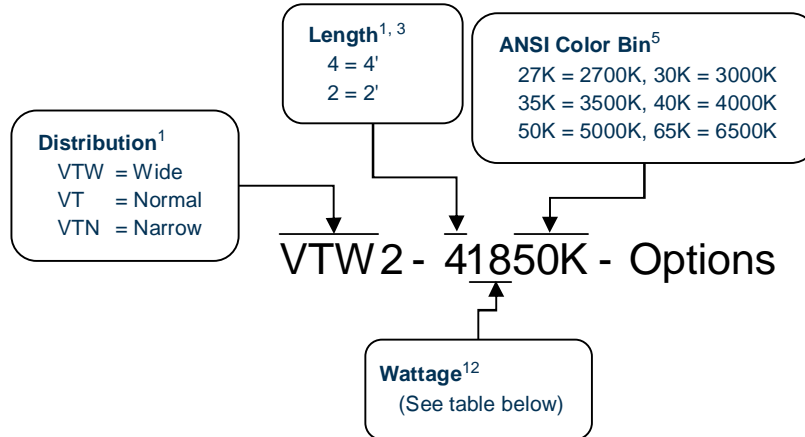
**Wide (180°) VTW2**



Philadelphia Headquarters: 487 Devon Park Drive, Suite 204, Wayne, PA 19087

[www.independenceLED.com](http://www.independenceLED.com) (484) 588-5401

# LED VAPOR TIGHT SYSTEM




Accessories:  
Mounting Brackets (188-1005204)

- Options
- EXT DIM
  - BAT (100mA, 4W) or - BAT (200mA, 8W)
  - 347/480VAC - Internal Autotransformer
  - other wireless sensors (consult factory)
  - SS = Stainless Steel Latches

Most Popular  
VT2-41850K  
VT2-42850K

VTN2-42850K

VTW2-42850K  
VTW2-41850K

	DLC V3.1 // Premium // Cat – 1 , 2
	Use - f
	VTW2-21450K VTW2-41350K VTW2-41850K VTW2-42850K
<a href="#">Click Here</a>	

Length (ft)	Nominal Wattage <sup>12</sup> (W)	Lumens <sup>1,12</sup> @5000K (-12%/ to 2700K)		
		VTW2	VT2	VTN2
2	18	2500	2550	
	28	3475	3900	
4	18	2500	2650	
	26	3600	3950	
	36	4650	5050	
	57	6850	7475	7050
8	Consult Factory			





LED Lighting | Forged in America™

# LED VAPOR TIGHT SYSTEM

## Notes

1. Not all model combinations are available
2. MBTF per MIL-HDBK-217F
3. Extended lead times and minimums maybe required for some models
4. N/A
5. Other ANSI Color bins available
6. Operation to -40°F/-40°C is available
7. Some low wattage models -4°F to +140°F/(-20°C to 60°C), consult factory.
8. Extended warranties are available
9. Non-UL applications (Some Models)
10. N/A
11. Specifications and availability subject to change without notice
12. Varies depending on color temperature, CRI, LED driver and lens ( $\pm 10\%$ )
13. N/A
14. EPCo - 179d tax incentive ready product given dimming bi-level switching requirements
15. Certain chemicals that may exist in end-user locations release airborne contaminants that can impact the integrity and safety of key fixture components that contain acrylic or polycarbonate material.
16. Worst case temperature for VTW2-428 @25°C ambient.
17. Consult website for further details.

## Compliance Standards

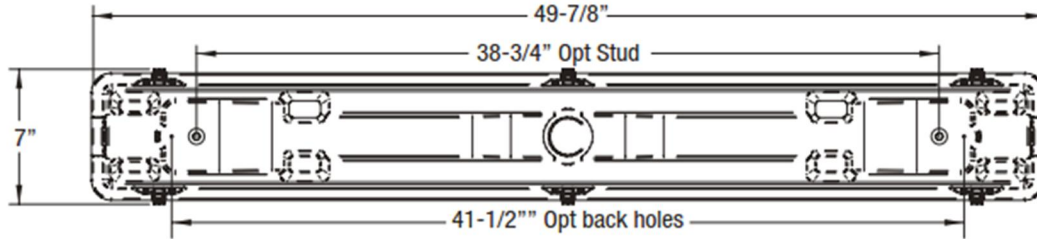
- UL 1993 - Self-Ballasted Lamps and Lamp Adapters, Ed. 4: 2012
- UL 1598 - Luminaires
- UL 1598C - Light-Emitting Diode (LED) Retrofit Luminaire Conversion Kits
- UL 8750 - Standard for Light Emitting Diode (LED) Equipment for Use in Lighting Products, Ed. 1: 2009
- CSA C22.2 No. 250.13 - Light emitting diode (LED) equipment for lighting applications, Ed. 1222012
- EN 62471:2008 - Photo Biological Safety of Lamps and Lamp Systems
- EN 62031:2008 - LED modules for general lighting. Safety specifications
- EN 61347-1:2008 - Lamp controlgear. General and safety requirements
- EN 55015:2006 - Limits and methods of measurement of radio disturbance characteristics of electrical lighting and similar equipment
- EN 61347-2-13:2006 - Lamp controlgear. Particular requirements for d.c. or a.c. supplied electronic control gear for LED modules
- EN 61000-3-2:2006 - Electromagnetic compatibility (EMC). Limits. Limits for harmonic current emissions
- EN 61000-3-3:2008 - Electromagnetic compatibility (EMC). Limits. Limitation of voltage changes, voltage fluctuations and flicker in public low-voltage supply systems
- EN 60598-1:2008 - Luminaires. General requirements and tests
- EN 61547:2009 - Equipment for general lighting purposes. EMC immunity requirements
- FCC Part 15, Subpart B, Class B -
- ANSI/ANSI G C78.81-2010 - Electric Lamps-Double-Capped Fluorescent Lamps-Dimensional and Electrical Characteristics
- ANSI/NEMA/ANSI G C78.377-2008 - American National Standard for Specifications for the Chromaticity of Solid State Lighting (SSL) Products
- IEC 60529-2004 - Degrees of Protection Provided by Enclosures (IP Code)
- DOH Article 81.19 (b) - Lighting and ventilation
- FDA Article 6-202.11 - Light Bulbs, Protective Shielding



# LED VAPOR TIGHT SYSTEM

## Mechanical

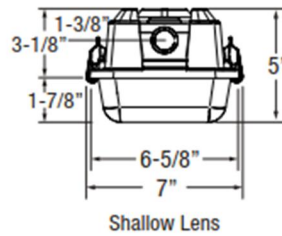
### TOP VIEW



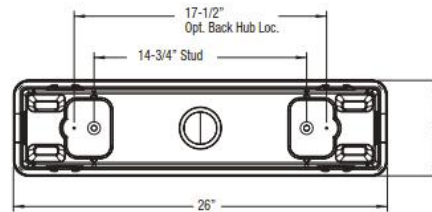
### SIDE VIEW



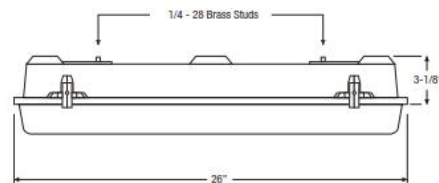
### END VIEW



### TOP VIEW



### SIDE VIEW



Note: Brass Studs on Inside of Unit are 10-32

### END VIEW

