

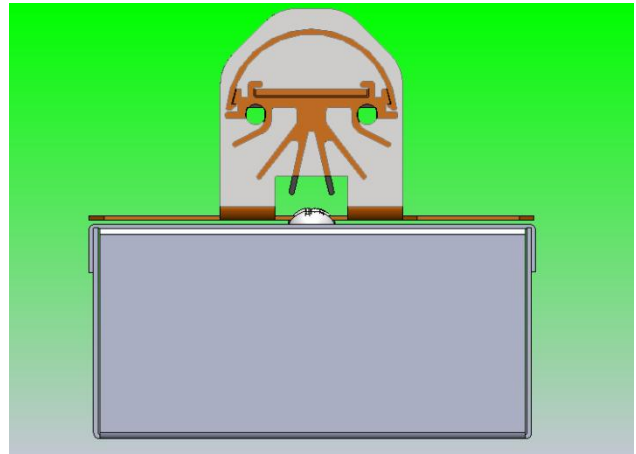


LED Lighting | Forged in America™

# STRIP FIXTURE SERIES

## THE HIGH PERFORMANCE

*LED Fixture Series for  
General, Direct and Indirect  
Illumination*



### KEY FEATURES INCLUDE:



#### Advanced Thermal Management

Industry Leading Deep Fin Heat Sinks with Aircraft Grade Aluminum and 9" (23cm) [min] of perimeter conductive surface.



#### Long Lasting LED Chips

Surface Mounted Diodes (SMDs) last longer than their Dual In-Line (DIP) predecessors.



#### Multiple Color Options

Three color options ensure that the new lighting will match your current aesthetics, and allows for custom color options



#### Modular Design

12" modular PC Boards allow for a wide range of sizes to be cost-effectively manufactured.



#### 10 Year Warranty

Industry Leading 10 Year Warranty up to 60,000 hours of operation on all LED Tubes and external drivers.



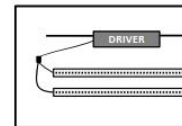
#### High Color Rendering

Colors are enhanced due to the use of LEDs selected directly on the black body curve.



#### Manufactured in America

With domestic and imported components. Factory: Southeastern PA. Higher quality control, faster delivery times, and new domestic job creation.



#### Independent Class II Driver

Safety, improved thermal management, and extended lifetime are gained by locating the driver remote from the LED Engine.

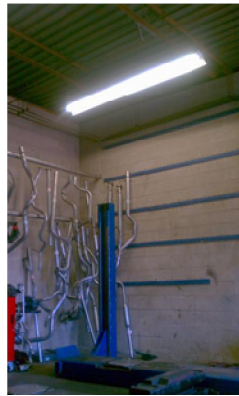
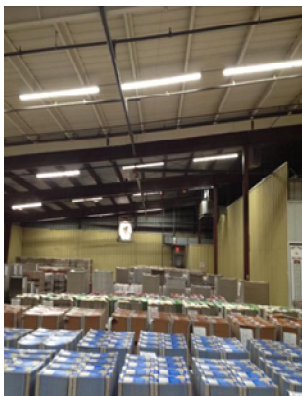
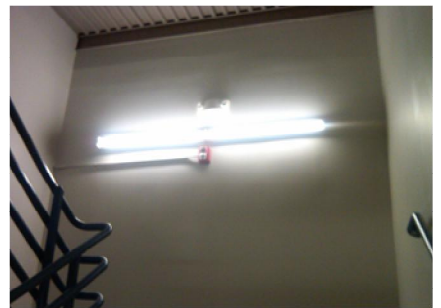
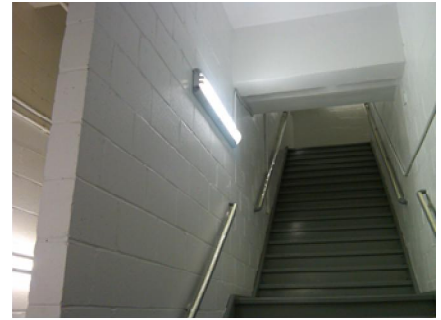


2.17.2015

Philadelphia Headquarters: 487 Devon Park Drive, Suite 204, Wayne, PA 19087

[www.independenceLED.com](http://www.independenceLED.com) (484) 588-5401

# STRIP FIXTURE SERIES





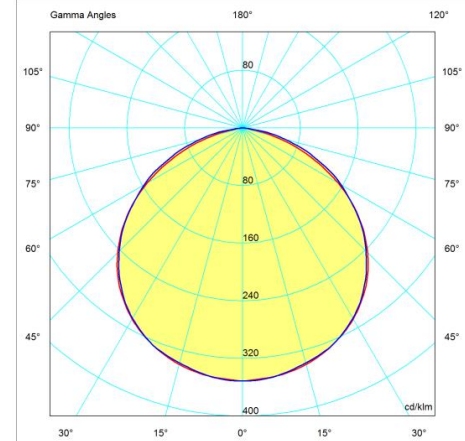
LED Lighting | Forged in America™

# STRIP FIXTURE SERIES

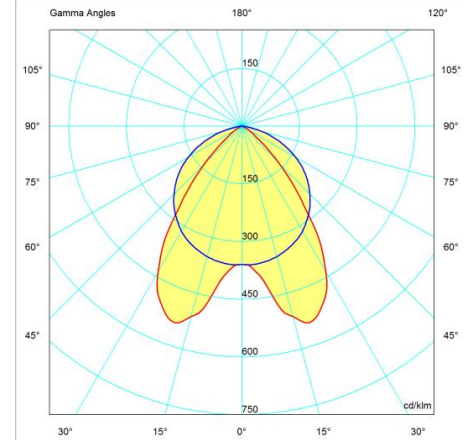
| Specification Table              |  |
|----------------------------------|--|
| Environmental                    | Dry or damp locations only<br>IP2X per EN60529           |
| Ambient Operation                | -25°F to 140°F/(-31°C to 60°C) <sup>6</sup>              |
| Storage                          | 25°F to +185°F/(-31°C to +85°C) <sup>6</sup>             |
| Wattage                          | See chart below <sup>11</sup> (±10%)                     |
| Input Voltage (nominal)          | 100-277VAC 50/60Hz .32-.18A<br>[120-430VDC] <sup>8</sup> |
| Power Factor (PF)                | >0.9   |
| Total Harmonic Distortion (ATHD) | <20%   |
| Life Time                        | >60k hrs   |
| Retro-Fit Kit Rated Life         | Calculated L70(6k) = 56kHrs <sup>16</sup>                |
| LED Engine per TM-21             | Reported L70(6k) >36kHrs                                 |
| LED Driver                       | >320khrs 120VAC, 80% load, 25°C                          |
| MBTF <sup>2</sup> -              | >90khrs 120VAC, 80% load, 60°C                           |
| Lifetime -                       |  |
| LM80 Data                        | NVLap Accreditation                                      |
| LED Type                         | SMD 3528   |
| Efficiency                       | >85lm/W <sup>10</sup> (See table below)                  |
| Normal                           | 160°FW, 120°FWHM   |
| Narrow                           | 120°FW, 80°FWHM  |
| Wide                             | 180°FW, 120°FWHM   |
| Energy Consumption [nominal]     | 16 kWh/1000 h  |
| Certifications                   | cUL, UL, FCC, DLC  |
| Warranty <sup>17</sup>           | LED Driver - 10 years                                    |
|                                  | LED Tube - 10 years up to 60kHrs                         |
|                                  | Fixture - 10 years                                       |
| Dimming                          | <20%-100% (See table below)<br>0-10V                     |
| Off State Power Consumption      | <1 Watt  |
| On State                         | Instantaneous  |

| Package Information |                        |
|---------------------|------------------------|
| Standard Package    | Case                   |
| Quantity            | 1 Unit                 |
| Sales Units         | 1 Unit                 |
| Package Items       | 1 Unit Complete        |
| Weight lbs(kg)      | Others consult factory |
| SF/R1               | 9 (4)                  |
| SF2                 | 10 (5)                 |

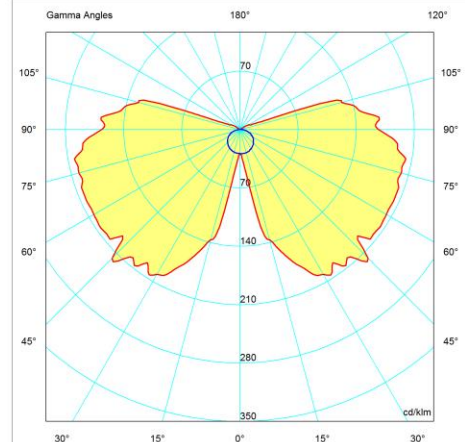
## Normal (60°)- SF1, SF/R1 or 2



## Narrow (40°) - SFN1, SFN2



## Wide (180°) SFW2



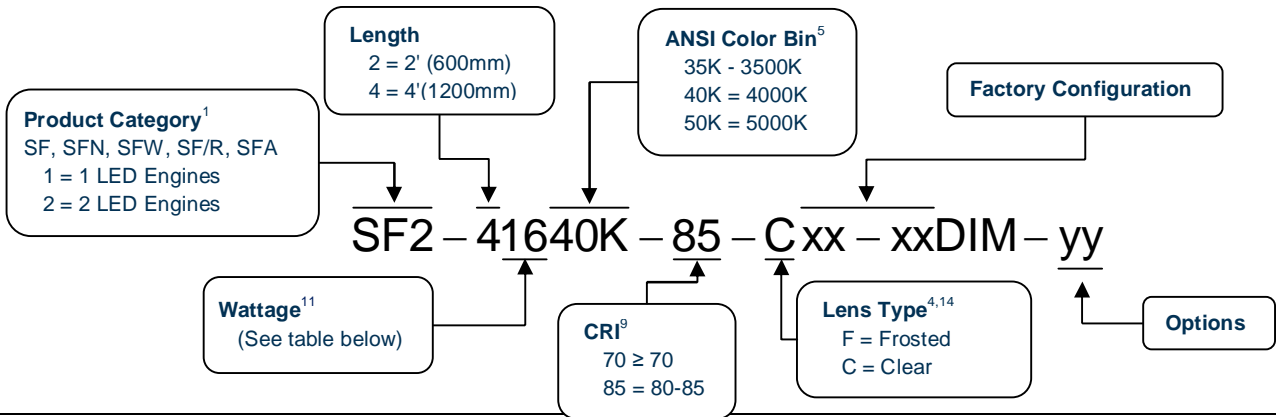
Philadelphia Headquarters: 487 Devon Park Drive, Suite 204, Wayne, PA 19087

[www.independenceLED.com](http://www.independenceLED.com) (484) 588-5401



LED Lighting | Forged in America™

# STRIP FIXTURE SERIES



|  |   |
|--|---|
| <b>Accessories (consult factory):</b><br>Hangers<br>SF Y-Hanger, 60" (192-0021000)<br>Wire Guard | <b>Options (consult factory)</b><br>- EXT DIM (HC403-KV ext antenna)<br>- W15 (15' SJOW)<br>- P6 (6', w/plug)<br>- BAT (100mA, 4W)<br>- BAT (200mA, 8W) |
| <b>Most Popular:</b><br>SF1-42240K-85-C<br>SF2-42950K-70-C                                       | SF2-42240K-85-F<br>SFN2-42950K-70-C   |

| Cat - 21) Linear Ambient Luminaires: Direct |                 |                 |                 |                 |
|---|-----------------|-----------------|-----------------|-----------------|
|   | SF1-42235K-85-C | SF1-42935K-85-C | SF2-42235K-85-C | SF2-42935K-85-C |
|   | SF1-42240K-85-C | SF1-42940K-85-C | SF2-42240K-85-C | SF2-42940K-85-C |
|   | SF1-42250K-85-C | SF1-42950K-85-C | SF2-42250K-85-C | SF2-42950K-85-C |
|   | SF1-42235K-85-F | SF1-42935K-85-F | SF2-42235K-85-F | SF2-42935K-85-F |
|   | SF1-42240K-85-F | SF1-42940K-85-F | SF2-42240K-85-F | SF2-42940K-85-F |
|   | SF1-42250K-85-F | SF1-42950K-85-F | SF2-42250K-85-F | SF2-42950K-85-F |

| Length (ft) | Total Wattage (W) <sup>11</sup> | Lumens <sup>1, 4, 11</sup> |                  |                                 |                  |                  |
|-------------|---------------------------------|----------------------------|------------------|---------------------------------|------------------|------------------|
|             |                                 | SF/R1, SF1<br>CRI - 85/70  | SFN1<br>CRI - 70 | SF/R2, SF2, SFA2<br>CRI - 85/70 | SFW2<br>CRI - 70 | SFN2<br>CRI - 70 |
| 2           | Consult Factory                 |                            |                  |                                 |                  |                  |
| 4           | 12                              | 1200/1325                  | -                | -                               | -                | -                |
|             | 16                              | 1600/1750                  | -                | -                               | -                | -                |
|             | 22                              | 2200/2400                  | 2200             | -                               | -                | -                |
|             | 29                              | 2900/3200                  | 2950             | -                               | -                | -                |
|             | 24                              | -                          | -                | 2400/2650                       | -                | -                |
|             | 32                              | -                          | -                | 3200/3500                       | -                | -                |
|             | 44                              | -                          | -                | 4400/4800                       | 4650             | 4400             |
| 58          | -                               | -                          | 5800/6400        | 6200                            | 5900             |                  |
| 8           | Consult Factory                 |                            |                  |                                 |                  |                  |



Philadelphia Headquarters: 487 Devon Park Drive, Suite 204, Wayne, PA 19087

[www.independenceLED.com](http://www.independenceLED.com) (484) 588-5401



LED Lighting | Forged in America™

# STRIP FIXTURE SERIES

## Notes

1. Not all model combinations are available
2. MBTF per MIL-HDBK-217F
3. Extended lead times and minimums maybe required for some models
4. Frosted lens has less output than clear lens
5. Other ANSI Color bins available
6. Operation to -40°F/-40°C is available
7. Extended warranties are available
8. Non-UL applications (Some Models)
9. 70 and 85 are standard and can be produced with any color
10. Specifications and availability subject to change without notice
11. Varies depending on color temperature, CRI, LED driver and lens (±10%)
12. Patent Pending: USA +40 Countries
13. EPC Act -179d tax incentive ready product given dimming bi-level switching requirements
14. Certain chemicals that may exist in end-user locations release airborne contaminants that can impact the integrity and safety of key fixture components that contain acrylic or polycarbonate material.
15. N/A
16. Worst case temperature for 29W @25°C.
17. Consult website for further details.

## Compliance Standards

- UL 1993 - Self-Ballasted Lamps and Lamp Adapters, Ed. 4: 2012
- UL 1598 - Luminaires
- UL 1598C - Light-Emitting Diode (LED) Retrofit Luminaire Conversion Kits
- UL 8750 - Standard for Light Emitting Diode (LED) Equipment for Use in Lighting Products, Ed. 1: 2009
- CSA C22.2 No. 250.13 - Light emitting diode (LED) equipment for lighting applications, Ed. 1222012
- EN 62471:2008 - Photo Biological Safety of Lamps and Lamp Systems
- EN 62031:2008 - LED modules for general lighting. Safety specifications
- EN 61347-1:2008 - Lamp controlgear. General and safety requirements
- EN 55015:2006 - Limits and methods of measurement of radio disturbance characteristics of electrical lighting and similar equipment
- EN 61347-2-13:2006 - Lamp controlgear. Particular requirements for d.c. or a.c. supplied electronic control gear for LED modules
- EN 61000-3-2:2006 - Electromagnetic compatibility (EMC). Limits. Limits for harmonic current emissions
- EN 61000-3-3:2008 - Electromagnetic compatibility (EMC). Limits. Limitation of voltage changes, voltage fluctuations and flicker in public low-voltage supply systems
- EN 60598-1:2008 - Luminaires. General requirements and tests
- EN 61547:2009 - Equipment for general lighting purposes. EMC immunity requirements
- FCC Part 15, Subpart B, Class B -
- ANSI/ANSL G C78.81-2010 - Electric Lamps-Double-Capped Fluorescent Lamps-Dimensional and Electrical Characteristics
- ANSI/NEMA/ANSL G C78.377-2008 - American National Standard for Specifications for the Chromaticity of Solid State Lighting (SSL) Products
- ISO-9001:2008 Certification - The International Organization for Standardization fosters consistency in product delivery and quality assurance
- IEC 60529-2004 - Degrees of Protection Provided by Enclosures (IP Code)

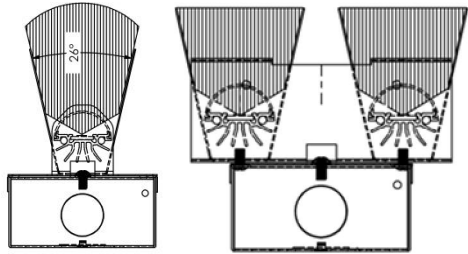
## Dimming Specification, LED Driver

| Parameter<br>(Values and options may vary consult factory) | Min.  | Typ.  | Max.  |
|--|-------|-------|-------|
| Absolute Maximum Voltage on the 0-10V Wire                 | -2V   |       | 15V   |
| 0-10V Wire Current Sourcing Capability                     | 100µA | 150µA | 200µA |
| 12V output voltage (Vaux)                                  | 10.5  | 12V   | 12.5V |
| 12V source current (Vaux)                                  |       |       | 6mA   |

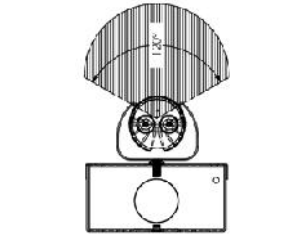


# STRIP FIXTURE SERIES

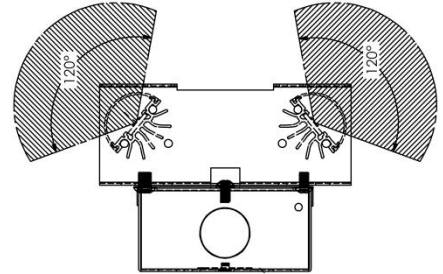
## Beam Pattern



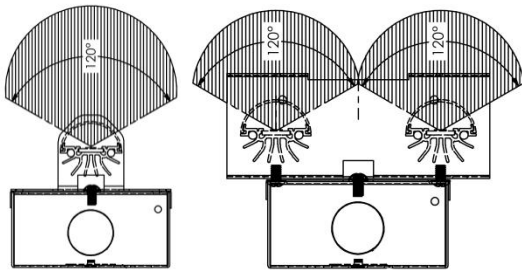
Narrow - SFN1, SFN2



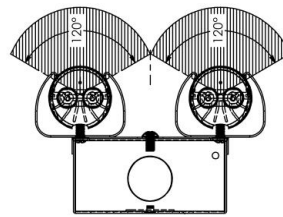
Normal (Rotatable)  
SF/R1



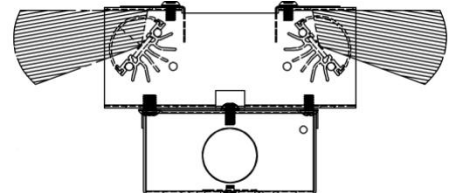
Angled (51°) - SFA2



Normal - SF1, SF2



Normal (Rotatable)  
SF/R2



Wide - SFW2

## Mechanical

