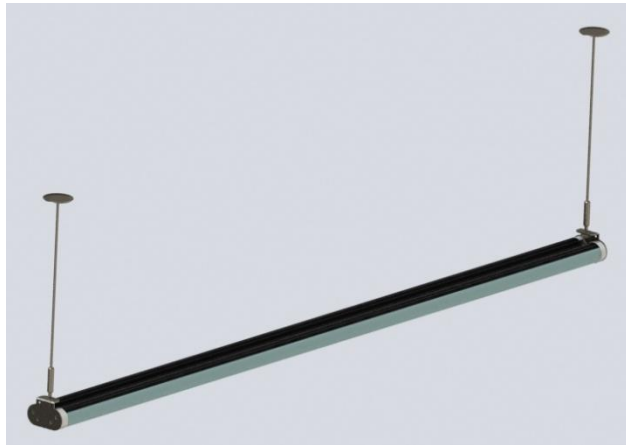


## THE HIGH PERFORMANCE

*LED Luminaire Series for Office, School, and General Locations*

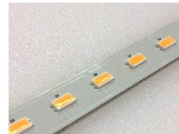


### KEY FEATURES INCLUDE:



#### Multiple Color Options

Ensure that the new lighting will match your current aesthetics, and allows for custom color options.



#### Long Lasting LED Chips

L<sub>90</sub> in excess of 101kHrs



#### 10 Year Warranty

Industry Leading 10 Year Warranty on all LED and external drivers.



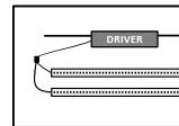
#### High Color Rendering

Colors are enhanced due to the use of LEDs selected directly on the black body curve.



#### Manufactured in America

With domestic and imported components. Factory: Southeastern PA. Higher quality control, faster delivery times, and new domestic job creation.



#### Independent Class II Driver

Safety, improved thermal management, and extended lifetime are gained by locating the driver remote from the LEDs.

# LED REMOTE PENDANT SYSTEM

**LENGTH OPTIONS:**

4' – standard, 2', 6' & 8' - special order

**OUTPUT WATTAGE (See table below)**

**COLOR OPTIONS:**

2700K, 3000K, 3500K, 4000K, 5000K standard<sup>5</sup>

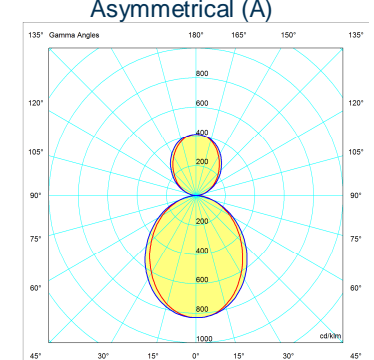
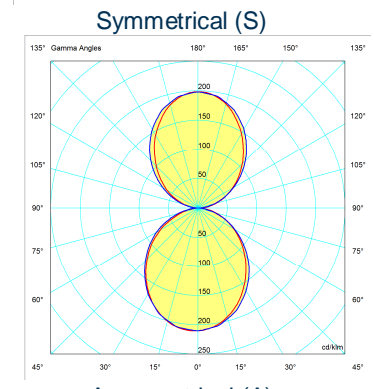
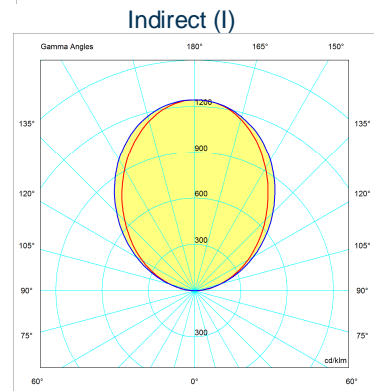
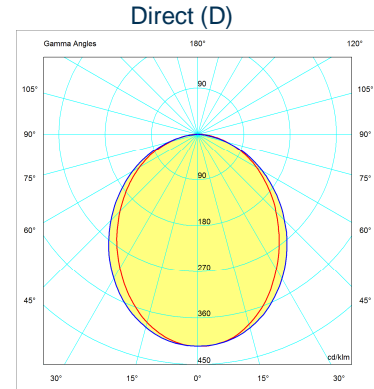
CRI – 85

DIMMING – standard (except - 0)

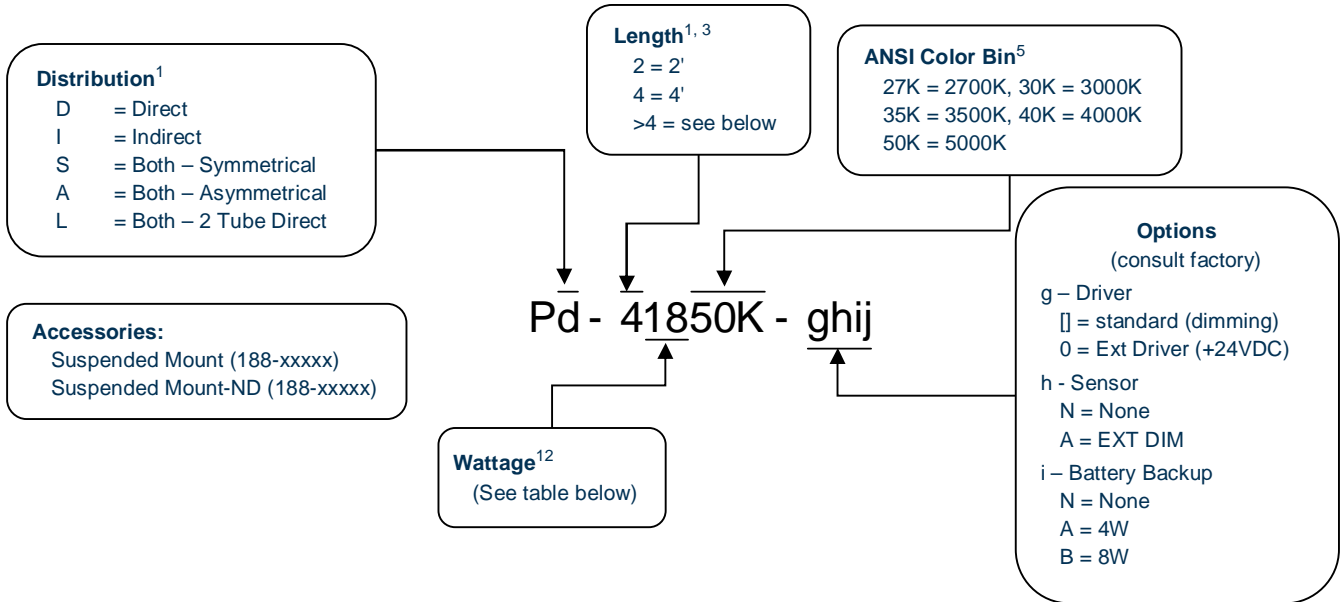
LENS - Frosted

Specification Table	
Environmental	Suitable for Damp Locations up to IP21 per EN60529
Ambient Operation	-25°F to 104°F/(-31°C to 40°C) <sup>6,7</sup>
Storage	-25°F to >185°F/(-31°C to >85°C)
Wattage	See table below <sup>12</sup>
Input Voltage (nominal)	100-277VAC 50/60Hz .8-.3A [120-300VDC] <sup>9</sup> +24VDC
Power Factor (PF)	>0.9
Total Harmonic Distortion (ATHD)	<20%
Life Time	>100khrs
Rated Life- LEDs per TM-21 -	Calculated L <sub>70</sub> (10k) = 378kHrs <sup>16</sup>
LED Driver <sup>7</sup>	Calculated L <sub>90</sub> (10k) = 101kHrs <sup>16</sup>
Lifetime - MBTF <sup>2</sup> -	Reported L <sub>70</sub> (10k) >60kHrs
LM80 Data	NVLap Accreditation
LED Type	SMD 5630
Efficiency (some models)	>130lm/W (See table below) <sup>12</sup>
	>DC numbers
Certifications	cUL, UL, FCC
Warranty <sup>17</sup>	LED Driver - 10 years
	LED - 10 years
	Fixture - 10 years
Dimming	<20%-100% (See below)
	0-10V (accept – ND)
Off State Power Consumption	0 Watts
On State	Instantaneous

Package Information	
Standard Package	Case
Quantity	1
Sales Units	1
Package Items	1 Unit Complete
Weight lbs(kg)	TBD



# LED REMOTE PENDANT SYSTEM



Length (ft)	Nominal Wattage <sup>12</sup> (W)	Lumens <sup>1,12</sup> @5000K (-12%/ to 2700K)		
2	Consult Factory			
4	18	2500	-	D
		-	2500	I
	28	2500	1250	A
	36	2500	2500	S
	24*	3100	-	D
		-	3100	I
	36*	3100	1550	A
	48*	3100	3100	S
	28	3550	-	D
		-	3550	I
36	3300	1650	A	
58	3550	3550	S	
>4	Consult Factory – will be assembled from multiple segments, length and wattage of product description will reflect total run length			



## Notes

1. Not all model combinations are available
2. MBTF per MIL-HDBK-217F
3. Extended lead times and minimums maybe required for some models
4. N/A
5. Other ANSI Color bins available
6. Operation to -40°F/-40°C is available
7. Some low wattage models -4°F to +140°F/(-20°C to 60°C), consult factory.
8. Extended warranties are available
9. Non-UL applications (Some Models)
10. N/A
11. Specifications and availability subject to change without notice
12. Varies depending on color temperature, CRI, LED driver and lens ( $\pm 10\%$ )
13. N/A
14. EPC Act -179d tax incentive ready product given dimming bi-level switching requirements
15. Certain chemicals that may exist in end-user locations release airborne contaminants that can impact the integrity and safety of key fixture components that contain acrylic or polycarbonate material.
16. Worst case temperature for NLSS-428 @25°C ambient.
17. Consult website for further details.

## Compliance Standards

- UL 1993 - Self-Ballasted Lamps and Lamp Adapters, Ed. 4: 2012
- UL 1598 - Luminaires
- UL 1598C - Light-Emitting Diode (LED) Retrofit Luminaire Conversion Kits
- UL 8750 - Standard for Light Emitting Diode (LED) Equipment for Use in Lighting Products, Ed. 1: 2009
- CSA C22.2 No. 250.13 - Light emitting diode (LED) equipment for lighting applications, Ed. 1222012
- EN 62471:2008 - Photo Biological Safety of Lamps and Lamp Systems
- EN 62031:2008 - LED modules for general lighting. Safety specifications
- EN 61347-1:2008 - Lamp controlgear. General and safety requirements
- EN 55015:2006 - Limits and methods of measurement of radio disturbance characteristics of electrical lighting and similar equipment
- EN 61347-2-13:2006 - Lamp controlgear. Particular requirements for d.c. or a.c. supplied electronic control gear for LED modules
- EN 61000-3-2:2006 - Electromagnetic compatibility (EMC). Limits. Limits for harmonic current emissions
- EN 61000-3-3:2008 - Electromagnetic compatibility (EMC). Limits. Limitation of voltage changes, voltage fluctuations and flicker in public low-voltage supply systems
- EN 60598-1:2008 - Luminaires. General requirements and tests
- EN 61547:2009 - Equipment for general lighting purposes. EMC immunity requirements
- FCC Part 15, Subpart B, Class B -
- ANSI/ANSI G C78.81-2010 - Electric Lamps-Double-Capped Fluorescent Lamps-Dimensional and Electrical Characteristics
- ANSI/NEMA/ANSI G C78.377-2008 - American National Standard for Specifications for the Chromaticity of Solid State Lighting (SSL) Products
- IEC 60529-2004 - Degrees of Protection Provided by Enclosures (IP Code)
- DOH Article 81.19 (b) - Lighting and ventilation
- FDA Article 6-202.11 - Light Bulbs, Protective Shielding

