

# STAIRWELL AND PASSAGEWAY FIXTURE

## THE HIGH PERFORMANCE

*LED Luminaire Series for  
Stairwells, Bathrooms,  
Passageways, and  
General Illumination*



### KEY FEATURES INCLUDE:



#### Multiple Color Options

Three color options ensure that the new lighting will match your current aesthetics, and allows for custom color options



#### 10 Year Warranty<sup>8</sup>

Industry Leading 10 Year Warranty on all LED Engines and external drivers.



#### Manufactured in America

With domestic and imported components. Factory: Southeastern PA. Higher quality control, faster delivery times, and new domestic job creation.



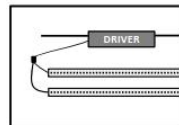
#### Long Lasting LED Chips

L<sub>90</sub> in excess of 100kHrs



#### High Color Rendering

Colors are enhanced due to the use of LEDs selected directly on the black body curve.



#### Independent Class II Driver

Safety, improved thermal management, and extended lifetime are gained by locating the driver remote from the LEDs.

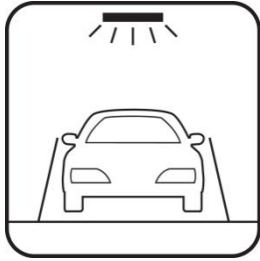




LED Lighting | Forged in America™

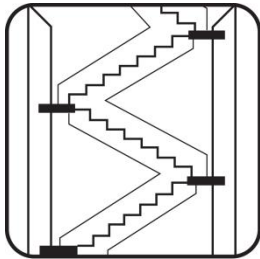
# STAIRWELL AND PASSAGEWAY FIXTURE

## 24/7 APPLICATIONS



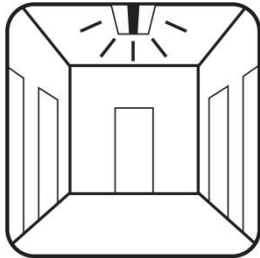
### PARKING

Structures, surface and underground garages



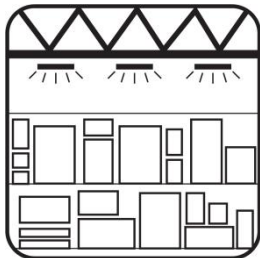
### STAIRWELL

24/7 fire stairs for any property type



### HALLWAY

Hotels, hospitals, multi-family & dorms



### INDUSTRIAL HIGH BAYS

Factories, warehouses & distribution centers



# STAIRWELL AND PASSAGEWAY FIXTURE

Specification Table	
Environmental	Dry or damp locations only IP2X per EN60529
Ambient Operation	-25°F to 140°F/(-31°C to 60°C) <sup>6,7</sup>
Storage	25°F to +185°F/(-31°C to +85°C) <sup>6</sup>
Wattage	See table below <sup>12</sup>
Input Voltage (nominal)	100-277VAC 50/60Hz .4-.15A +24VDC (0.3-1.0A)
Power Factor (PF)	>0.9
Total Harmonic Distortion (ATHD)	<20%
Life Time LED per TM-21	Calculated L <sub>70</sub> (10k) = 398kHrs <sup>16</sup> Calculated L <sub>90</sub> (10k) = 102kHrs Reported L <sub>70</sub> (10k) >60kHrs >100khrs, Full load, 25°C
LED Driver	
MTBF <sup>2</sup> - Lifetime -	>200kHrs 120VAC, 80% load, 25°C >56kHrs 120VAC, 80% load, 60°C
LM80 Data	NVLap Accreditation
LED Type	SMD 5630
Efficiency	>125lm/W <sup>12</sup> (See table below)
Lens Material	Acrylic <sup>15</sup>
Certifications	UL, FCC, DLC
Warranty <sup>17</sup>	LED Driver - 10 years LED - 10 years Fixture - 10 years
Dimming	0-10V - <20-100% Electronic Low Voltage (ELV) <sup>11</sup>
Off State Power Consumption	0 Watts
On State	Instantaneous

## LENGTH OPTIONS:

2' & 4' - standard

## OUTPUT WATTAGE

(See table below)

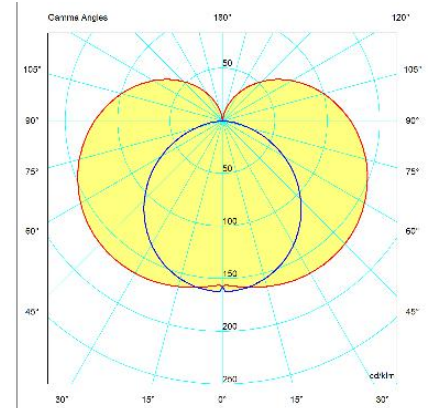
## COLOR OPTIONS:

2700K, 3000K,  
3500K, 4000K & 5000K  
standard<sup>5</sup>

## COLOR RENDERING INDEX

(CRI) 85 standard

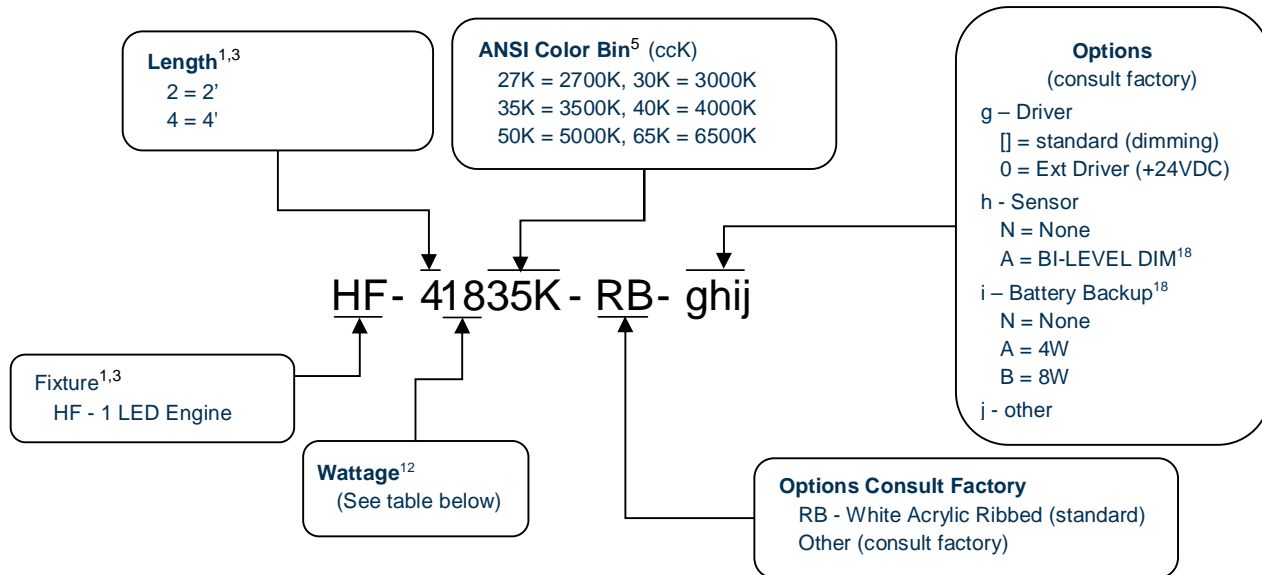
## DIMMING - standard




Package Information	
Standard Package	Case
Quantity	2 Unit
Sales Units	1 Unit
Package Items	2 Unit Complete
Weight lbs(kg)	18 (8)



# STAIRWELL AND PASSAGEWAY FIXTURE



Most Popular: HF-20940K-RB-BA HF-20940K-RB-BAA	HF-41335K-RB-BA HF-41335K-RB-BAA	HF-40935K-RB-BA HF-40935K-RB-BAA
--	-------------------------------------	-------------------------------------

 <a href="#">Click Here</a>	HF-20927K-RB	HF-40927K-RB	HF-41327K-RB
	HF-20930K-RB	HF-40930K-RB	HF-41330K-RB
	HF-20935K-RB	HF-40935K-RB	HF-41335K-RB
	HF-20940K-RB	HF-40940K-RB	HF-41340K-RB
	HF-20950K-RB	HF-40950K-RB	HF-41350K-RB

Length (ft)	Wattage <sup>12</sup> (nominal)	Lumens <sup>1,12</sup> @5000K (-12%/ to 2700K)
2	09	1250
	14	1775
4	9	1250
	13	1775
	18	2375
	28	3650



## Notes

1. Not all model combinations are available
2. MBTF per MIL-HDBK-217F
3. Extended lead times and minimums maybe required for some models
4. N/A
5. Other ANSI Color bins available
6. Operation to -40°F/-40°C is available
7. Some low wattage models -4°F to +140°F/(-20°C to 60°C), consult factory.
8. Extended warranties are available. 5yr warranty products available.
9. N/A
10. Specifications and availability subject to change without notice
11. Some models can use ELV Dimming with a special order, consult factory
12. Varies depending on color temperature, CRI, LED driver and lens (±10%)
13. Patent Pending: USA +40 Countries
14. EPC Act -179d tax incentive ready product given dimming bi-level switching requirements
15. Certain chemicals that may exist in end-user locations release airborne contaminants that can impact the integrity and safety of key fixture components that contain acrylic or polycarbonate material.
16. Worst case temperature @25°C.
17. Consult website for further details.
18. Conforms to basis of NFPA 101, ICB 1006, NYC BC 1006 when used with bi-level control and/or battery backup. Please consult factory for proper specification and installation. IndependenceLED is not responsible for improper installation, maintenance, and/or specification.

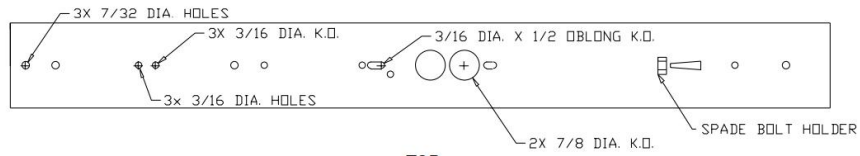
## Compliance Standards

- UL 1993 - Self-Ballasted Lamps and Lamp Adapters, Ed. 4: 2012
- UL 1598 - Luminaires
- UL 1598C - Light-Emitting Diode (LED) Retrofit Luminaire Conversion Kits
- UL 8750 - Standard for Light Emitting Diode (LED) Equipment for Use in Lighting Products, Ed. 1: 2009
- CSA C22.2 No. 250.13 - Light emitting diode (LED) equipment for lighting applications, Ed. 12/2012
- EN 62031:2008 - LED modules for general lighting. Safety specifications
- EN 61347-1:2008 - Lamp controlgear. General and safety requirements
- EN 55015:2006 - Limits and methods of measurement of radio disturbance characteristics of electrical lighting and similar equipment
- EN 61347-2-13:2006 - Lamp controlgear. Particular requirements for d.c. or a.c. supplied electronic control gear for LED modules
- EN 61000-3-2:2006 - Electromagnetic compatibility (EMC). Limits. Limits for harmonic current emissions
- EN 61000-3-3:2008 - Electromagnetic compatibility (EMC). Limits. Limitation of voltage changes, voltage fluctuations and flicker in public low-voltage supply systems
- EN 61547:2009 - Equipment for general lighting purposes. EMC immunity requirements
- FCC Part 15, Subpart B, Class B -
- ANSI/ANSI G C78.81-2010 - Electric Lamps-Double-Capped Fluorescent Lamps-Dimensional and Electrical Characteristics
- ANSI/NEMA/ANSI G C78.377-2008 - American National Standard for Specifications for the Chromaticity of Solid State Lighting (SSL) Products
- IEC 60529-2004 - Degrees of Protection Provided by Enclosures (IP Code)
- DOH Article 81.19 (b) - Lighting and ventilation
- FDA Article 6-202.11 - Light Bulbs, Protective Shielding

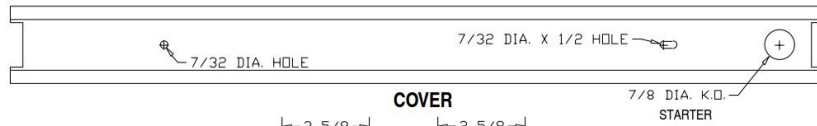


# STAIRWELL AND PASSAGEWAY FIXTURE

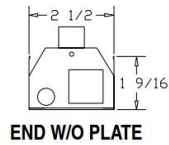
## Fixture Specification



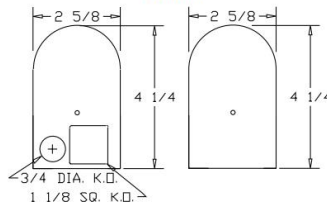
**TOP  
W/O DIFFUSER**



**COVER**

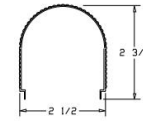


**END W/O PLATE**



**END PLATE**

STANDARD PAIR IS ONE PLAIN  
AND ONE WITH KOS



**DIFFUSER  
RIBBED**

Length (ft)	
2	24¼
4	48¼

